



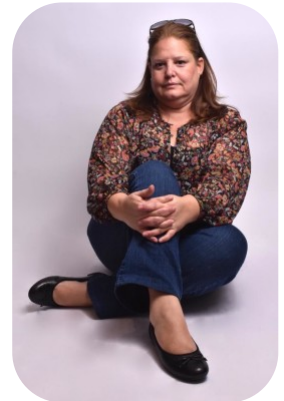
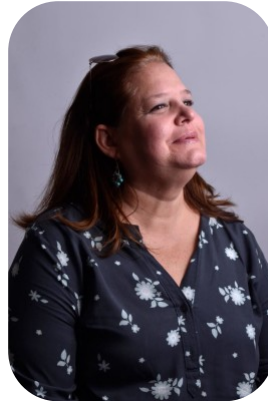
# Ana Isabel Bertolani



Videos: 1

Age: 41-50	Height: 5ft3inch	Eye Colour: Hazel	Accent: London
Gender:F	Weight: 90kg	Waist: 36	Bust: 38
Location: London	Shoe Size: 7	Hips: 40	
Drives: No	Hair Color: Brunette		

Talents  
MATURE MODELS, EXTRAS



Additional Talents:  
READ - HIKE

FOR ANY INQUIRIES PLEASE CONTACT US

0207 834 66 60 - Office

[www.fusionmng.com](http://www.fusionmng.com)

[cast@fusionmng.com](mailto:cast@fusionmng.com)

